

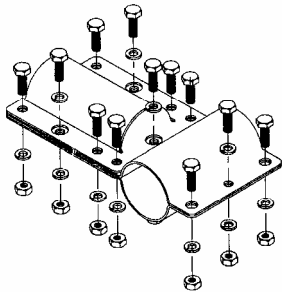
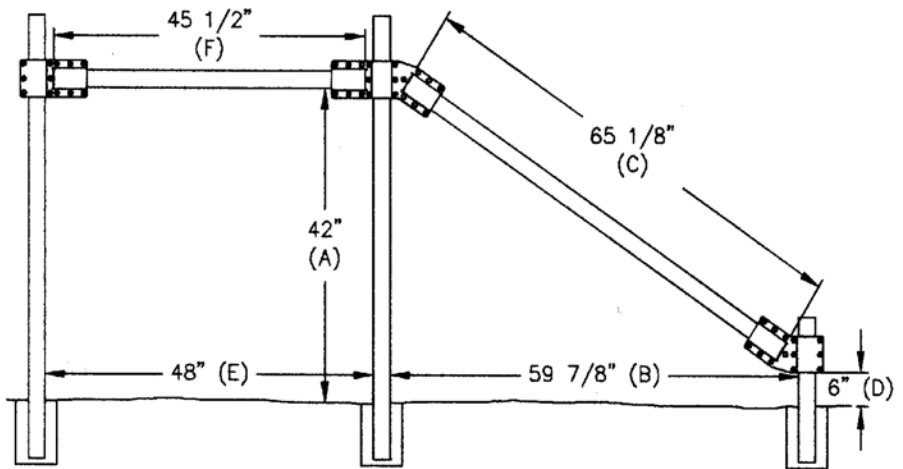
NO WELD PIPE CONNECTORS INSTRUCTION SHEET

1. Determine the distance between post and length of braces by using charts and examples below.
2. Cut post desired length. Consider the following:
 - a. Posthole depth
 - b. Height of fence to be built
 - c. Level of the ground
 - d. Space needed for **No Weld Pipe Connectors** is: 4 7/8" for single clamp, 9 3/4" for double clamps.
3. Cut braces proper length using Chart A for Downbraces. For H-Braces measure the distance between the posts and subtract 2 1/2".
 - a. Remove all burrs and slag from ends of pipe used for braces to insure proper fit of No Weld Pipe Connectors.
4. Dig postholes in proper locations. Measure distances horizontally from highest point of ground level.
5. Assemble corner post in postholes using No Weld Pipe Connectors.
 - a. The two (2) center bolts and nuts on one pipe clamp can be tightened to hold the clamps on the pipe leaving the other clamp and clamp brackets loose for making adjustments.
 - b. For 2 7/8" pipe post and 2 3/8" braces use pipe clamp Part #278-700-01 for post clamp.
6. Check corner post for proper alignment with fence to be built. Make sure all nuts are properly tightened and all No Weld Clamps and Brackets fit snugly together.
7. Pour concrete in postholes around pipe post.

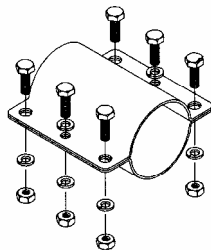
ALLOW CONCRETE TO CURE BEFORE STRETCHING WIRE BETWEEN CORNER POSTS.

CHART A

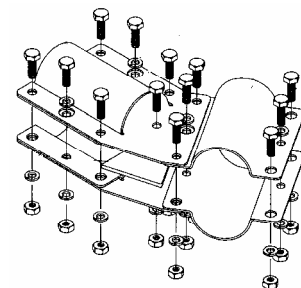
A	B	C	D
36"	50 5/8"	54 1/8"	6"
42"	59 7/8"	65 1/8"	6"
48"	69 1/8"	76 1/8"	6"
54"	78 3/8"	87 1/8"	6"
60"	87 5/8"	98 1/8"	6"
66"	96 7/8"	109 1/8"	6"
72"	106 1/8"	120 1/8"	6"
78"	115 3/8"	131 1/8"	6"
84"	124 5/8"	142 1/8"	6"
90"	133 7/8"	153 1/8"	6"
96"	153 1/8"	164 1/8"	6"



PART #238-700-90



PART #278-700-01



PART #238-700-33

NOTE:
CLAMPS CAN BE USED TO SPLICE POSTS OR BRACES TOGETHER. THIS WILL HELP ELIMINATE WASTING SHORT PIECES OF PIPE.

DISCLAIMER:

NO WELD PIPE CONNECTORS ARE DESIGNED TO BE USED FOR FENCE CONSTRUCTION ONLY.

PATENT PENDING